

### ▲ XC-401 Multifunctional Patient Care Manikin (Female)

This model is suitable for the health and nursing schools and medical schools at all levels for use in nursing teaching. All the joints can move actively, the waist can bend, all parts are detachable. The model is made of Semi-Hard plastic, material is durable, using conveniently, can execute a variety of training nursing and simple operation.

#### Feature:

- 1) Face washing, body washing in bed.
- 2) Oral cavity nursing, artificial teeth care.
- 3) Simple tracheostomy nursing.
- 4) Oxygen inhalation method (stuffy nose, nasal catheter).
- 5) Nasal feeding.
- 6) Simple gastric lavage.
- 7) Simple CPR press.
- 8) A variety of simple puncture simulation: Pleural biopsy, the liver biopsy, kidney puncture, abdominal puncture, bone marrow puncture and lumbar puncture.
- 9) Deltoid muscle injection, subcutaneous injection.
- 10) IV injection.
- 11) Venous transfusion.
- 12) Intragluteal injection.
- 13) Female Catheterization.

Packing: 1 pcs/carton, 95x46x25cm, 10kgs

## XC-400 Simulator Series



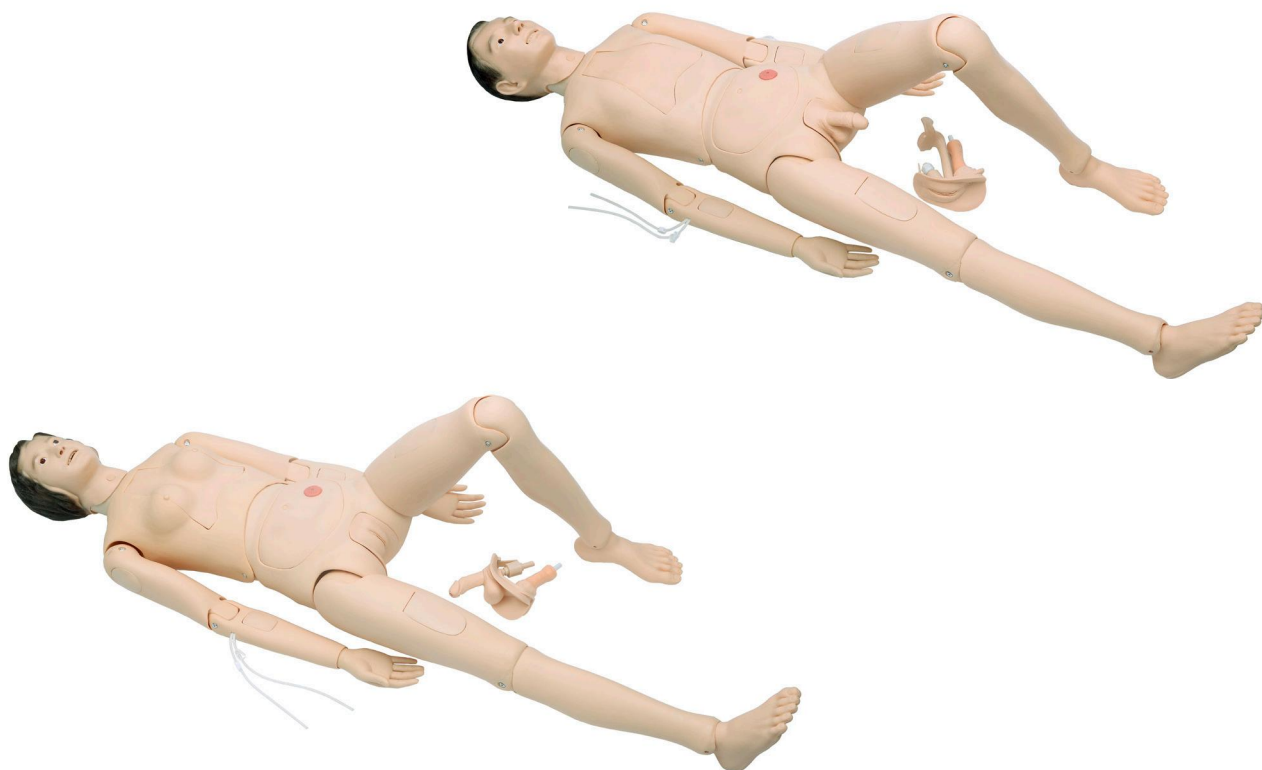
### ⚠ XC-401M Multifunctional Patient Care Manikin (Male)

This model is suitable for the health and nursing schools and medical schools at all levels for use in nursing teaching. All the joints can move actively, the waist can bend, all parts are detachable. The model is made of Semi-Hard plastic, material is durable, using conveniently, can execute a variety of training nursing and simple operation.

#### Feature:

- 1) Face washing, body washing in bed.
- 2) Oral cavity nursing, artificial teeth care.
- 3) Simple tracheostomy nursing.
- 4) Oxygen inhalation method (stuffy nose, nasal catheter).
- 5) Nasal feeding.
- 6) Simple gastric lavage.
- 7) Simple CPR press.
- 8) A variety of simple puncture simulation: Pleural biopsy, the liver biopsy, kidney puncture, abdominal puncture, bone marrow puncture and lumbar puncture.
- 9) Deltoid muscle injection, subcutaneous injection.
- 10) IV injection.
- 11) Venous transfusion.
- 12) Intragluteal injection.
- 13) Male Catheterization.

Packing: 1 pcs/carton, 95x46x25cm, 10kgs



▲ XC-401A High Quality Nurse Training Doll (Male)  
 ▲ XC-401B High Quality Nurse Training Doll (Female)

This model is developed for nurse training, is widely used in first aid and emergency rescue as well as the regular nurse training. This model is made according to the normal position and activities of the human body as much as possible. Each model is equipped with male and female genitalia, can exchange to use. Model of the arms, thigh and buttock have injection pads available training. This model is equipped with internal organs, not only for basic nursing, medical care available to use also. Made of PVC.

Feature:

- 1) Head nursing: face washing, eye drops, ear drops, oral care.
- 2) Holistic Nursing: sponge bath in bed, sitting sponge bath, wear clothes, cold or heat therapy.
- 3) Oxygen inhaling.
- 4) Nasal feeding.
- 5) Gastric lavage.
- 6) Tracheostomy care.
- 7) Study chest anatomical structure of vital organs.
- 8) Arm intravenous injection, transfusion training.
- 9) Injection Next Deltoid.
- 10) Intramuscular injection.
- 11) Male and female catheterization.
- 12) Enema.
- 13) Percutaneous transrenal stomy.
- 14) Study abdominal cavity anatomical structure of vital organs.

Packing: 1 pcs/carton, 99x42x54cm, 18kgs

## XC-400 Simulator Series



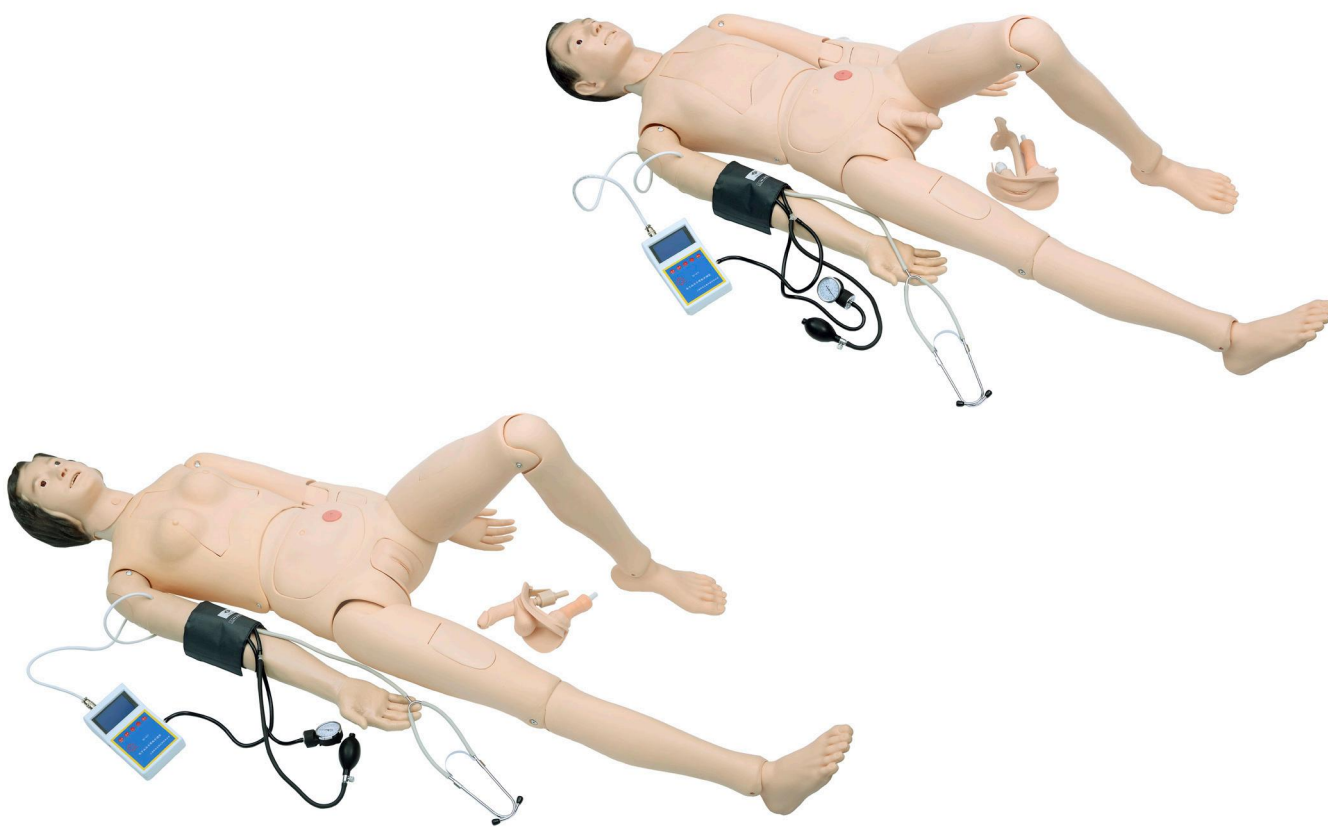
- ⚠ XC-401A-1 New Style High Quality Nurse Training Doll (Male)
- ⚠ XC-401B-1 New Style High Quality Nurse Training Doll (Female)

This manikin is upgraded from XC-401A/B.

### Feature:

- 1) Head nursing: face washing, eye drops, ear drops, oral care.
- 2) Holistic Nursing: sponge bath in bed, sitting sponge bath, wear clothes, cold or heat therapy
- 3) Oxygen inhaling.
- 4) Nasal feeding.
- 5) Gastric lavage.
- 6) Tracheostomy care
- 7) Study chest anatomical structure of vital organs.
- 8) Arm intravenous injection, transfusion training.
- 10) Intramuscular injection.
- 11) Male and female catheterization.
- 12) Enema.
- 13) Percutaneous transrenal stomy.
- 14) Study abdominal cavity anatomical structure of vital organs.
- 15) Blood transfusions, draw blood.

Packing: 1 pcs/carton, 99x42x54cm, 18kgs



- ⚠ XC-401A-2 Advanced Nurse Training Doll with Blood Pressure Training Arm (Male)
- ⚠ XC-401B-2 Advanced Nurse Training Doll with Blood Pressure Training Arm (Female)

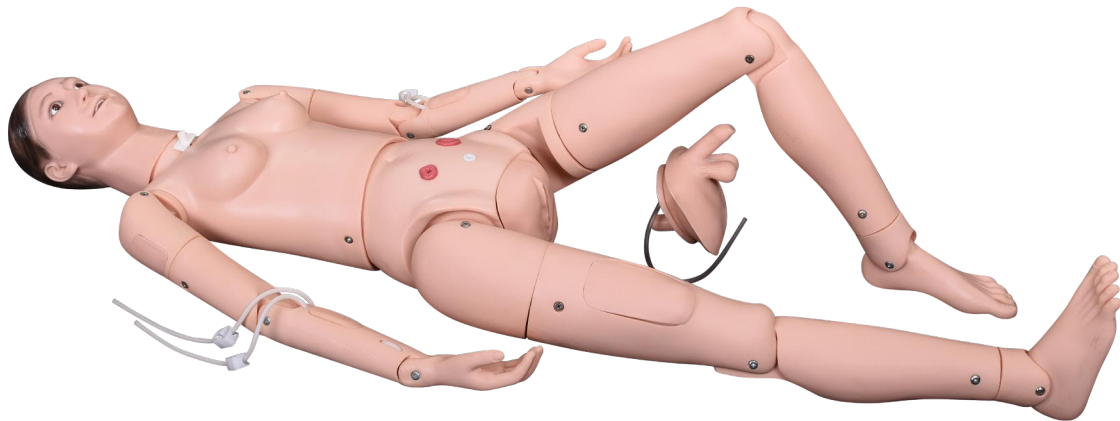
This manikin is upgraded from XC-401A-1/401B-1.

**Feature:**

- 1) Head nursing: face washing, eye drops, ear drops, oral care.
- 2) Holistic Nursing: sponge bath in bed, sitting sponge bath, wear clothes, cold or heat therapy.
- 3) Oxygen inhaling.
- 4) Nasal feeding.
- 5) Gastric lavage.
- 6) Tracheostomy care.
- 7) Study chest anatomical structure of vital organs.
- 8) Arm intravenous injection, transfusion training.
- 9) Injection Next Deltoid.
- 10) Intramuscular injection.
- 11) Male and female catheterization.
- 12) Enema.
- 13) Percutaneous transrenal stomy.
- 14) Study abdominal cavity anatomical structure of vital organs.
- 15) Blood transfusions, draw blood.
- 16) Blood pressure training arm, with Blood pressure meter and stethoscope.

Packing: 1 pcs/carton, 99x42x54cm, 19kgs

## XC-400 Simulator Series



### ▲ XC-401C Advanced Multifunctional Nursing Training Doll

This newly developed advanced multifunctional nursing training doll, features: Standard size, life like, exchangeable male and female genital insert with movable joints, simulate joint stiffness, trunk forward flexion, can sit on wheelchair bathing the bed-ridden patient.

Feature:

- 1) Practice lifting, carrying & moving patient.
- 2) Eye care.
- 3) Tracheostomy care .
- 4) Oral care.
- 5) Oxygen inhalation, inhalation therapy .
- 6) Nasal feeding .
- 7) Gastric (stomach) lavage.
- 8) Breast care.
- 9) Intramuscular injection.
- 10) Ostomy care.
- 11) Catheterizations.
- 12) Enemas.
- 13) Bandages.

Packing: 1pcs/carton, 99x42x54cm, 20kgs

### ► XC-457 Blood Pressure Training Arm

The model is suitable for teaching and exercising blood pressure skills. Systolic blood pressure, diastolic blood pressure and pulse rate values can be adjusted. Blood pressure setting is accurate to 1mm Hg.

Packing: 1pcs/carton, 78x22x15cm, 5kgs







### ⚠️ XC-401D Advanced Trauma Simulator

Advanced trauma simulator is a full-body, lifelike PVC manikin that realistically simulates a trauma patient. It is specifically designed for training professionals in the field of emergency care and transportation of the sick and injured. The advanced trauma simulator consists of 22 modules. It can be attached to various parts of the trauma on the care model to simulate a variety of physical trauma, including facial burns 1.2.3 degrees, lacerations, contusions, small intestine protruding, open fractures, gunshot wounds, stab wounds and a metallic foreign body limb fracture and other injuries.

Feature:

A. Washing, disinfection, hemostasia, enswathement, etc

B. Open fracture, truncation trauma

C. TRAUMA MODULE:

- 1) Facial Burn, degree I, II, III.
- 2) Laceration of forehead.
- 3) Jaw wound.
- 4) Open clavicle fracture and contusion wound on the chest.
- 5) Abdominal wound with protruding intestines.
- 6) Chest wall section and suture incision.
- 7) Abdomen wall section and suture incision.
- 8) Open humerus fracture of the arm.
- 9) Open fracture of the hand (including parenchyma laceration, fracture and bone tissue exposure).
- 10) Gunshot wound of the palm.
- 11) Burn in the forearm, degree I, II, III.
- 12) Open femur fracture of the leg.
- 13) Open tibia fracture of the leg.
- 14) Leg amputation.
- 15) Metal pricking wound of the thigh.
- 16) Tear of the thigh skin.
- 17) Sepsis wound of the thigh.
- 18) Infective ulcer of the thigh.
- 19) Thigh section and suture incision.
- 20) Foot necrosis.
- 21) Amputation stump of arm.
- 22) Amputation stump of leg.

Packing: 1pcs/carton, 99x42x54cm, 24kgs

# XC-400 Simulator Series

**➤ XC-401D-1 Advanced Trauma Accessories**

## TRAUMA MODULE:

- 1) Facial Burn, degree I, II, III.
- 2) Laceration of forehead.
- 3) Jaw wound.
- 4) Open clavicle fracture and contusion wound on the chest.
- 5) Abdominal wound with protruding intestines.
- 6) Open humerus fracture of the arm.
- 7) Open fracture of the hand (including parenchyma laceration, fracture and bone tissue exposure).
- 8) Gunshot wound of the palm.
- 9) Burn in the forearm, degree I, II, III.
- 10) Open femur fracture of the leg.
- 11) Open tibia fracture of the leg.
- 12) Leg amputation.
- 13) Metal pricking wound of the thigh.
- 14) Tear of the thigh skin.
- 15) Sepsis wound of the thigh.
- 16) Infective ulcer of the thigh.
- 17) Foot necrosis.
- 18) Amputation stump of arm.
- 19) Amputation stump of leg.

**Packing: 1sets/carton, 54x28x21cm, 5kgs**



**➤ XC-425 3-Year-Old Child Nursing Training Doll**

This 3-year-old child nursing training doll with 85 cm length and flexible joint.

### Feature:

- 1) Daily child care: Dressing, living, bathing & etc.
- 2) Eye, Oral, Nose care.
- 3) Nursing of foreign body airway obstruction
- 4) Bladder irrigation.
- 5) Gastric (stomach) lavage.
- 6) Catheterizations.
- 7) Nasal feeding.
- 8) Intramuscular injection: Arm and Thigh have intramuscular injection pad.
- 9) Wound Care - Suture.
- 10) Ostomy care.
- 11) Bladder puncture.
- 12) Replaced abdominal wall: Boy has a Hernia repair scar, Girl has an Appendectomy scar.

**Packing: 1pcs/carton, 79x48x27cm, 13kgs**





## ➤ XC-404 Basic CPR Training Model (Half Body)

The model is designed according to human anatomical half body, served as a teaching aid for education, hygiene, first aid training and demonstration. It shows the half body from the head to the sixth rib of the chest. The cross-section is color painted to show different organs clearly and vivid. The full shape of the heart and lung showing the various movements when demonstrating heart pressure and mouth to mouth respiration.

### Feature:

#### CPR manikin features:

- 1) Head can be raised up and down, neck joint is movable.
- 2) Eyelid can open and close.
- 3) Nose wing is soft, easy to tweak. The mouth can open and close. Can do mouth to mouth respiration or mouth to nose respiration.
- 4) Consist of spring and heart model in heart part.
- 5) Skin is springy with natural skin color.

#### CPR instrument feature:

- 1) Green light bright, heart pressure correct.
- 2) Red light bright, heart pressure too strong .
- 3) No light bright, pressure on a wrong place or pressure is too light .

Packing: 1pcs/carton, 65x27x47cm, 8kgs



## ⚠ XC-404A Electronic Half-body CPR Training Manikin (Male)

## ⚠ XC-404B Electronic Half-body CPR Training Manikin (Female)

This Adult CPR model is simple, economical and portable, an ideal model of CPR training and teaching.

### Feature:

- 1) Airway opening simulation .
- 2) Handling press on the chest: strength correct (4-5cm), show correct bumping . Pressure too large (over 5cm) , show alert bumping.
- 3) Mouth to mouth (blowing): the tidal volume range judged by observing the ups and downs of the chest . (tidal volume standard  $\leq 500\text{ml}/600\text{m}-1000\text{ml}$ ) .
- 4) Operating frequency: the latest international standard: 100 times/min.

Packing: 1pcs/carton, 78x36x25cm, 7kgs

## XC-400 Simulator Series

- ✓ XC-406-1 / 406A-1 Whole Body Basic CPR Manikin Style 100 (Male / Female)
- ✓ XC-406-2 / 406A-2 Whole Body Basic CPR Manikin Style 200 (Male / Female)
- ✓ XC-406-5 / 406A-5 Whole Body Basic CPR Manikin Style 500 (Male / Female)



Features and advantages  
Implement standard: AHA (American Heart Association) guideline for CPR

### Feature:

#### CPR manikin feature:

- 1) Clearly anatomic characteristic, realistic touch feeling and lifelike skin color, vivid appearance.
- 2) Simulate vital signs.
  - (a) Pupil state: contrast observation of pupils, one is dilated, the other one is contracted.
  - (b) Carotid artery response: simulate carotid artery pulse.
- 3) Open airway.
- 4) Can perform artificial breathing and external cardiac compression.

#### CPR instrument feature:

- 1) Available CPR training.
- 2) Electronic monitoring of compression site.
- 3) Indicators show inflation volume, correct inflation volume: 800-1200ml.
  - (a) Insufficient inflation volume, yellow indicator.
  - (b) Proper inflation volume, green indicator.
  - (c) Excessive inflation volume, red indicator.
- 4) Indicators show compression depth: correct compression depth: 4-5cm.
  - (a) Insufficient compression depth, yellow indicator.
  - (b) Proper compression depth, green indicator.
- 5) Voice Prompt.
- 6) Operation rate:  $\geq 100$  times/min.
- 7) Operation cycle: 2 valid inflation after 30 valid compression, 5 cycles.
- 8) Set the operating time, values in seconds.
- 9) Result Printing: XC-406-2/XC-406-5.

Packing: 1pcs/carton, 95x34x58cm, 21kgs



### ⚠️ XC-406-5 PLUS New Style CPR training Manikin

Features and advantages

Implement standard: AHA (American Heart Association) 2010-/2015 guideline (as optional)

CPR manikin feature:

- Clearly anatomic characteristic, realistic touch feeling and lifelike skin color, vivid appearance
- Simulate vital signs
  - (a) Pupil state: contrast observation of pupils, before first aid is dilated, after successfully first aid is contracted
  - (b) Carotid artery response: automatically simulate carotid artery pulse
  - (c) Realistic Chest Rise: Visualize realistic chest rise with BVM ventilation
- Open airway
- Can perform artificial breathing and external cardiac compression

CPR instrument feature:

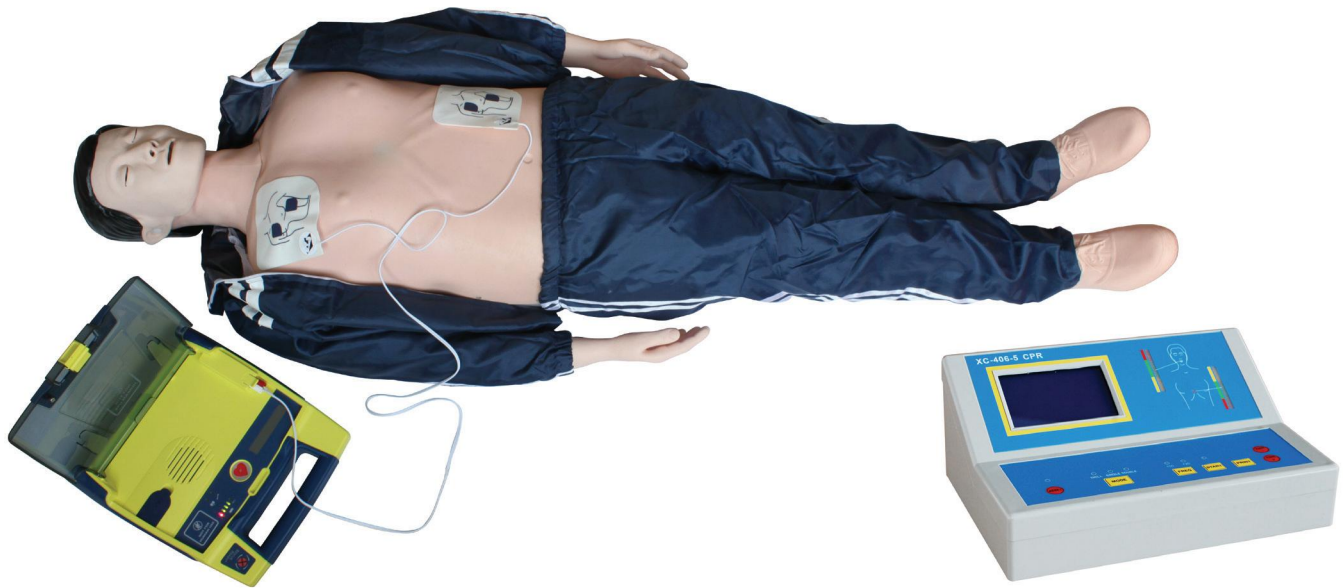
- Available CPR training and testing module
- Electronic monitoring of compression site: Display the compression site position on the screen's CPR instrument, and inform whether it is correct or not.
- Indicators show compression depth: correct compression depth: 5-6cm (a) Insufficient compression depth, yellow indicator (b) Proper compression depth, green indicator (c) Excessive compression depth, red indicator
- Indicators show inflation volume, correct ventilation volume: 800-1200ml (a) Insufficient ventilation volume, yellow indicator (b) Proper ventilation volume, green indicator (c) Excessive ventilation volume, red indicator
- Airway management: Realistic airway with tongue, vocal cords, and trachea. standard oral intubation, supporting to head tilt and Jaw thrust, audible feedback if the intubation is correct.
- Real-time feedback: Digital and graphical interface one-click switch, instantaneous displaying graphics of data is available as evaluating mode, In the evaluating mode, real-time monitoring of CPR metrics provides feedback on time to CPR, compression depth and rate, ventilation rate and volume, "no-flow" time, and number of cycles
- Voice Prompt
- Operation rate: 100 times/min, 120 times/min (as optional)
- Operation cycle: 2 valid ventilations after 30 valid compressions, 5 cycles
- Set the operating time, values in seconds
- Result printing, statistic report.

Optional function:

Human trachea intubation

Packing: 1pcs/carton, 95x34x58cm, 22kgs

## XC-400 Simulator Series



### ⚠ XC-BLS Basic Life Support, BLS Manikin (CPR & AED Simulator)

Features and advantages

Implement standard: AHA (American Heart Association) guideline for CPR

The system provides BLS (Basic Life Support) teaching, operation process training and assessment. The system consists of basic emergency application software, full-body manikin, simulative AED; it can simulate pupil changes, carotid artery pulse, CPR training, AED defibrillation, case editing and multimedia courseware teaching. It is applicable for CPR training organization, hospitals, Medical colleges and Medical School for BLS training.

Features:

- 1) Simulating of a patient: the changes of pupils and carotid.
- 2) Open airway.
- 3) CPR: instantaneous graphics displaying of data, statistic report, training evaluation for one or more person, optional sounds related to CPR.
- 4) AED Debrillation: use a AED simulator machine , provide electrode patch.
- 5) Script editor: the system provides multiple emergency cases.

Optional function

Human trachea intubation

Packing: 1pcs/carton, 95x34x58cm, 22kgs

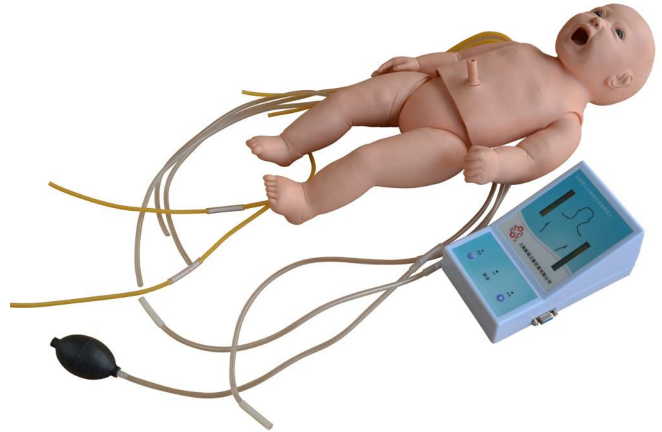


## ➤ XC-423 Advanced infant CPR and Nursing Manikin

Design according to infant anatomical structure, imported material, flexible joints, soft skin, realistic and vividly Features:

- 1) General care: change diapers, wear clothes, oral care, hot and cold therapy, bandaging.
- 2) Venous transfusion/puncture: arm vein include: brachiocephalic vein and superficial veins. Scalp vein Include: frontal vein, superficial temporal vein and femoral vein.
- 3) Umbilical cord care: ligature umbilical cord, umbilical venous intubation and transfusion.
- 4) Gastric intubation: detect tube position by means of auscultation; can practice gastrointestinal decompression, nasal feeding, gastric lavage, etc.
- 5) Bone marrow puncture: practice tibial puncture; outflow of simulative bone marrow shows proper puncture operation; drug liquid can be injected into and can practice transfusion operation.
- 6) CPR training operation.
- 7) Support mouth to mouth, mouth to nose, simple respirator to mouth, electronically monitor compression; frequency and volume of blowing, compression times, frequency and depth, blowing and compression can be training separately.

Packing: 1pcs/carton, 64x20x34cm, 8kgs



## ◀ XC-422 Infant Obstruction Model

1. Artificial respiration and external chest compression;
2. Simulation of natural airway;
3. Airway opening and chest compression;
4. Chest rise when airway opened;
5. Simulation of foreign-body airway obstruction.

Packing: 1pcs/carton, 54x28x21cm, 4kgs

## ➤ XC-422A Child Choke Model

This child model ribs, sternum and xiphoid process can be touched, easy for operation and location. Include foreign objects in different shapes, sizes and materials, can simulate foreign objects airway obstruction in various degrees. It is specially designed for Heimlich Maneuver, back blows and chest thrusts.

Packing: 1pcs/carton, 43x25x25cm, 5kgs



## XC-400 Simulator Series

### XC-416 Infant CPR Training Model

CPR manikin feature:

- 1) Clearly anatomic characteristic, realistic touch feeling and lifelike skin color, vivid appearance.
- 2) Can perform artificial respiratory, extracardial compression and airway open .
- 3) Operation mode: CPR training, can perform compression and inflationcompression depth: approximately 13mm-20mm

When the compression depth is proper or excessive, indicators will accordingly be green, yellow, and alarm will ring accordingly

CPR instrument feature:

- 1) Indicator show inflation volume, correct inflation volume: 30ml-50ml; Fast ventilation > 30ml within 0.27 seconds indicated by red light. When the inflation volume is excessive, proper, indicators will accordingly be yellow, green, and alarm will ring accordingly
- 2) Indicator show compression depth: correct
- 3) Indicator show compression position: Right compression position indicated by red light on the middle chest
- 4) Operation frequency:  $\geq 100$  times/ min.
- 5) Ratio of compression and artificial respiratory: 30:2/single or 15:2/double.
- 6) Operation cycle: after 2 valid inflation, then 5 cycles CPR operation according to the ratio of compression and inflation 30:2 or 15:2.



Packing: 1pcs/carton, 64x20x34cm, 5kgs

### XC-426 Child CPR Training Manikin

CPR manikin feature:

- 1) External breast compression and artificial respiratory: indicator light display and sound prompting device.
- 2) Operation methods: exercise operation.
- 3) Examination of carotid response: pinch the pressure ball by hand and simulate carotid pulse.

Packing: 1pcs/carton, 79x48x27cm, 13kgs







### ◀ XC-407 Human Trachea Intubation Model

This model is designed as a teaching model for training the medical students, basic clinic nurses and first aid people to demonstrate and practice trachea intubation through mouth.

- 1) Trachea intubation through mouth.
- 2) Compare pupils: one is normal, another is large.

Packing: 1pcs/carton, 54x29x35cm, 10kgs

### ▶ XC-407A Advanced Human Trachea Intubation Model

Features:

- 1) Upgraded from XC-407.
- 2) Neck backward function, more realistic simulation of endotracheal intubation technique and teaching demonstration and practice operation.

Packing: 1pcs/carton, 54x29x35cm, 10kgs



### ◀ XC-410 The Model of Newborn Intubation

This model is used to demonstrate the newborn baby intubation and train the students to learn intubation skills. Served as an ideal model for medical colleges, nursing schools and hospitals etc.

Packing: 12pcs/carton, 54x40x50cm, 10kgs

### ▶ XC-410A Infant Intubation Training Model

Realistic anatomical structure of infant mouth, pharynx, trachea. Tracheal intubation, directly observe the expansion of lungs and stomach by insufflating air into the tube and stomach so as to verify if the tube position is right.

Packing: 1pcs/carton, 38x20x28cm, 3kgs



## XC-400 Simulator Series

### ➤ XC-454 Tracheostomy Simulator

- 1) Trachea anatomy is standard; trachea is touchble.
- 2) Simulate dorsal position and neck extending.
- 3) Percutaneous tracheostomy, including various incisions: longitudinal incision, transverse incision, crisscross incision, U shape and inverted-U shape incision.
- 4) Cricothyrotomy endotracheal intubation.

Packing: 1pcs/carton, 43x25x35cm, 5kgs



### ⬅ XC-454A Advanced Adult Tracheotomy Care Model

- 1) Precise Anatomy: pharynx, epiglottis, trachea, esophagus, position of tracheotomy, cricoid and left, right bronchial trees.
- 2) Tracheotomy Care.
- 3) Sputum Suction.
- 4) Clean and Care of Tracheal Cannula.

Packing: 1pcs/carton, 51x28x51cm, 10kgs

### ➤ XC-458 Suction Training Model

- 1) Suction tube can be inserted into nasal cavity and oral cavity, and simulated sputum can be suctioned.
- 2) Suction tube can be inserted into trachea and bronchia through nasal cavity or oral cavity. And trainers can observe the interior operation and simulate intubation and suction.
- 3) Suction tube can be inserted into trachea and bronchia through tracheotomy cannula. And trainers can observe the interior operation and simulate intubation and suction.
- 4) By taking off one half of the face, the intubating position can be confirmed, and the anatomical structures of nasal cavity, pharynx, oral cavity and cervix can be learned. The trainers can exercise suction skill under straight observation, and improve the effectiveness of the training.

Packing: 1pcs/carton, 43x25x35cm, 5kgs





#### ◀ XC-403 Dental Care Model (28 teeth)

These models are to serve for demonstration in mouth protection and relative clinical teaching. Consists of gum, teeth, tongue and palate. It demonstrates teeth form and oral cavity cleaning and protection. With tooth brush.

XC-403 28 teeth 19x16x11cm

Packing: 20pcs/carton, 53x39x47cm, 15kgs

XC-403A 32teeth 24x16.2x13.7cm

Packing: 20pcs/carton, 64x53x38cm, 22kgs

#### ◀ XC-403A Dental Care Model (32 teeth)

- XC-403B Small Dental Care Model (28 teeth)
- XC-403C Small Dental Care Model (32 teeth)

These models are to servc for demonstration in mouth protection and relative clinical teaching. Consists of gum, teeth, tongue and palate. It demonstrates teeth form and oral cavity cleaning and protection. With tooth brush.

XC-403B 28 teeth 11x16.5x11cm

Packing: 30pcs/carton, 55x39x47cm, 13kgs

XC-403C 32 teeth 11.3x17x10cm

Packing: 30pcs/carton, 55x39x47cm, 13kgs



#### ◀ XC-403D Dental Care Model (with Cheek)

Model is making from the life size dental. Anatomical structure including: cheek, palatal, teeth(crown), gums, upper and lower dental arch, tongue. It demonstrates teeth form and oral cavity cleaning and protection.

Packing: 32pcs/carton, 53x30x41cm, 15kgs

## XC-400 Simulator Series



### XC-405 Nurse Basic Practice Teaching Model

The basic practice teaching model is designed according to human anatomy and suitable for nursing schools and hospitals for demonstration and practice. It has 5 parts and can demonstrate 15 operations.

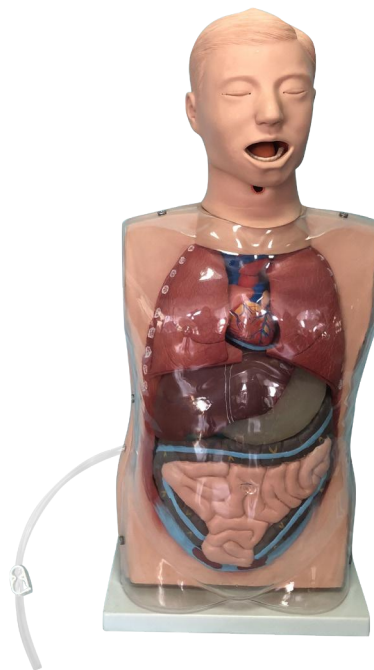
- Part 1: Upper and front part of male body
- Part 2: Left hand
- Part 3: Male lower abdomen and perineum
- Part 4: Buttock
- Part 5: Female perineum

Packing: 1set/carton, 71x37x46cm, 11kgs

### XC-405-2 Transparent Gastric Lavage Model

The model simulates a male adult upper body structure, with anatomical structure of nasal cavity, oral cavity, teeth, tongue, uvula, epiglottis, vocal cord, trachea, lungs, esophagus, stomach, liver and small intestine. The simulator is made of imported material with realistic touch feeling, and the stomach is made of high intensity transparent material, which is convenient to observe, can directly observe the realistic organs and structures of chest cavity and abdominal cavity and the gastric lavage process. Helper for pediatric nursing teaching and training.

Packing: 1pcs/carton, 88x39x30cm, 9kgs



### XC-ECG ECG Simulator

#### FEATURES:

1. Defibrillation shock can be delivered through manikin or simulator.
2. Built-in circuitry allows you to defibrillate and pace directly into the ECG simulator and observe ECG rhythms through the PADS connector.
3. Convert feature (Function require a defib manikin).
4. Select another rhythm to run immediately after defib discharge (Function require a defib manikin).
5. Pacing can be done on any manufacturer's defibrillator (Function require a defib manikin).

Packing: 1pcs/carton, 58x37x29cm, 7kgs



### ◀ XC-408 Electronic Urethral Catheterization Simulator

This model can be demonstrated some functions: catheterization of male, catheterization of female and intestinal irrigation etc.

Packing: 1pcs/carton, 52x30x40cm, 7kgs

### ▶ XC-405A Simple Male Urethral Catheterization Simulator

This model can simulate real urethral catheterization operation training, realistic genitalia can carry out real urthral catheterization and genital care operation.

Packing: 2pcs/carton, 58x37x29cm, 7kgs



### ◀ XC-405B Simple Female Urethral Catheterization Simulator

This model can simulate real urethral catheterization operation training, realistic genitalia can carry out real urthral catheterization and genital care operation. With about 10cm rectum enema function.

Packing: 2pcs/carton, 58x37x29cm, 7kgs



## XC-400 Simulator Series



▲ XC-408C Advanced Male Urethral Catheterization Simulator



▲ XC-408D Advanced Female Urethral Catheterization Simulator

This model can be practiced just as on a real patient. A lubricated catheter can be inserted in the urethral orifice, passed through the urethra, and into the bladder. When the bladder is successfully entered, artificial urine (water) will flow from the catheter.

Packing: 1pcs/carton, 56x24x54cm, 9kgs



▲ XC-408E Transparent Male Urethral Catheterization Simulator



▲ XC-408F Transparent Female Urethral Catheterization Simulator

This simulator based on the normal human anatomy. Students can practice catheterization while observing what is happening internally, also view the indwelling condition of a balloon catheter, flow of urine, and the relative position of the pelvis and bladder through a transparent hypogastrium.

Packing: 1pcs/carton, 51x28x51cm, 8kgs



### ➤ XC-453 Advanced Intramuscular Injection Training Model

- 1) Structure of left gluteal: osteal marks, gluteal muscles, ischiadic nerve and veins.
- 2) Left gluteal can be taken off. So it is easy to observe internal structure and make sure position of ischiadic nerve and veins.
- 3) Gluteal intramuscular injection training.

Packing: 1pcs/carton, 54x29x35cm, 7kgs



### ⬅ XC-453A Intramuscular Injection Model

This model with realistic skin is perfect for teaching proper injection techniques and how to avoid nerves and veins. The see-through right side of the model shows internal structure including bones, muscles, nerves, and veins. The gluteus medius, nerves, veins, ilium crista, and greater trochanter can be palpated to confirm the correct injection points. Fluid injected in the proper place is discharged through a drain tube into drain bag. A green light indicates correct injection technique and positioning - a buzzer and flashing red light warn students if they have gone too deep or if needle position is incorrect.

Packing: 1pcs/carton, 43x28x44cm, 11kgs

### ➤ XC-431 Buttock Injection Model

This model shows the location for muscle injection on the buttock, supply for training the students to learn injection skills.

Packing: 10pcs/carton, 82x44x33cm, 12kgs



### ⬅ XC-431A Electronic Buttocks Injection Simulator

This model based on the normal human anatomy. For students to wear, surface is very similar to a real body. Simulated injection liquid can be injected into it when inject on the correct area. Alarm system included.

Packing: 1pcs/carton, 44x17x35cm, 4kgs

## XC-400 Simulator Series

### ➤ XC-420A Transparent Curettage Model

This model is designed for learners to learn artificial abortion curettage in clinical practice. It allows beginners to learn the anatomy of obstetrics and gynecology, and practice dilation, curettage, urethral catheterization and other related operation.

Packing: 1 pcs/carton, 51x28x51cm, 8kgs



### ⬅ XC-429 Female Internal and External Genital Organs

This model is served as a visual aid in teaching human anatomy in nurse schools and medical colleges. It shows the entire female genital organs including uterus, uterus appendix (fallopian tube, ovary and its membrane, ligament teres uteri, ligament ovary proprium), vagina and the structure of external genital organ. Part of uterus and vagina are dissected to show its internal structures. Size: life-size.

Packing: 20 pcs/carton, 50x35x40cm, 8kgs

### ➤ XC-436 Natural Uterus Model

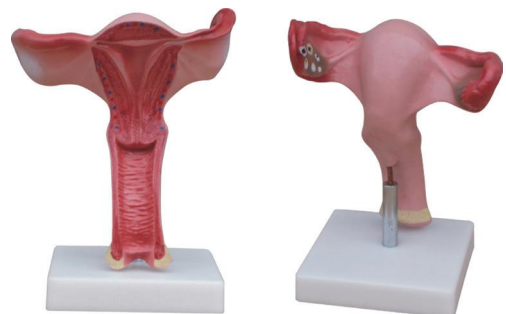
With the coronal section this model shows:

- 1) Uterus
- 2) The cervix is divided into a supra-vaginal portion and a vaginal portion
- 3) The ligaments of the uterus are eight in number
- 4) The fallopian tubes
- 5) The ovaries

XC-436 Packing: 20 pcs/carton, 54x28x21cm, 6kgs

XC-436A Packing: 20 pcs/carton, 50x35x42cm, 11kgs

### ➤ XC-436A Magnified Uterus Model



### ➤ XC-441 IV Training Hand

This model includes mainly vein used for IV injection, blood transfusion and other puncture practices. Revehent blood will appear when the injection way is correct.

Packing: 4pcs/carton, 45.5x37x26.5cm, 8kgs



### ⬅ XC-441A Electronic IV Training Hand

This model includes mainly vein used for IV injection, blood transfusion and other puncture practices. Alarm system included.

Packing: 4pcs/carton, 45.5x37x26.5cm, 9kgs

### ➤ XC-441B Wearable Intramuscular Injection Upper-Arm Simulator

Feature:

- 1) The simulator is wearable.
- 2) Red light and sound will alarm if injection is too deep or the position is wrong.
- 3) Simulated liquid could be used.
- 4) Realistic skin, elaborate design.

Packing: 4pcs/carton, 46x37x27cm, 8kgs



### ⬅ XC-450 Intradermal Injection Simulator

This intradermal injection model provides realistic feel and appearance to ensure a realistic training experience. The arm features eight sites for practicing intracutaneous injections. If fluid is properly injected, a characteristic skin welt will form.

Packing: 4pcs/carton, 45x37x27cm, 6kgs

## XC-400 Simulator Series

### ➤ XC-434 Injectable Training Arm Model (With Set) ✔ XC-434A Injectable Training Arm Model (Without Set)

This arm model can demonstrate the following items:

- 1) Vein phlebotomy on elbow forearm.
- 2) Vein injection on elbow forearm.
- 3) Vein blood transfusion on elbow forearm.
- 4) Vein liquid transfusion on elbow forearm.
- 5) Muscular injection on deltoid on the side of upper limb.

XC-434 Packing: 2pcs/carton, 75x20x29cm, 8kgs

XC-434A Packing: 6pcs/carton, 66x24x30cm, 7kgs



### ➤ XC-446A Multi-Functional IV Training Arm

This lifelike adult arm reproduction with multi-vein system is designed for peripheral intravenous therapy. Rotation at deltoid for easier access during peripheral IV line insertion and removal. Revealing blood will appear when the injection way is correct. The skin and blood vessels can be easily replaced, and can be used repeatedly.

Packing: 1pcs/carton, 78x22x15cm, 3kgs



### ◀ XC-446B Advanced Child IV Training Arm

- 1) Simulate radial artery pulse by pulse bulb manually, and confirm the injection site.
- 2) Provide trainings of radial artery puncture, haemospasia, transfusion; there is obvious feeling when needle penetrates into the vein, and blood flash back indicates accurate insertion.

Packing: 1pcs/carton, 65x18x16cm, 3kgs

### ➤ XC-446C Advanced Multi-Functional IV Training Arm with Electric Blood Circle System

This simulator is upgraded from XC-446.

- 1) The instrument can simulate blood circulation.
- 2) Lifelike arm reproduction with multi-vein system (8 vein).

Packing: 1pcs/carton, 88x34x21cm, 8kgs



### ◀ XC-446E Artery Puncture Training Arm

1. Lifelike adult male arm reproduction with infusible arteries designed for training the proper arterial puncture procedure for blood gas analysis.
2. Deltoid intramuscular injection.

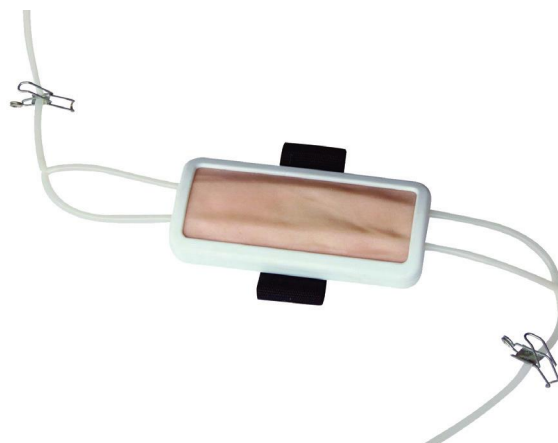
Packing: 6pcs/carton, 66x24x30cm, 7kgs



### ➤ XC-442 IV Injection Pad

This portable model can be used for injection, blood transfusion and hemospasia training. The skin and blood vessels can be easily replaced.

Packing: 30pcs/carton, 55x39x47cm, 15kgs



### ◀ XC-442A Suture Practice Pad

This portable model can be used for suture practice. Skin can be easily replaced.

Packing: 30pcs/carton, 55x39x47cm, 15kgs

### ➤ XC-443 Sebaceous Cyst Excision Model

This model contains 15 human sebum gland cyst, three-layers structures, which is easily to be used for operative training of lipoma excision.

Packing: 10pcs/carton, 39x35x29cm, 5kgs



## XC-400 Simulator Series



### XC-445 Multi-Functional Intramuscular Injection Training Pad

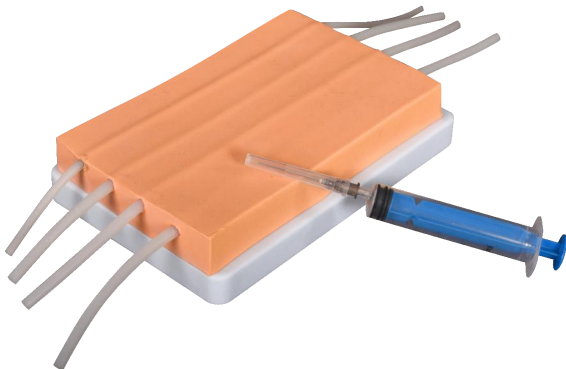
The model consists of skin, subcutaneous tissue and muscle layer. Can be used for intradermic injection, hypodermic injection and intramuscular injection. A wearable design makes it convenient for training. Injection liquid can be injected into it, squeeze the pad after use.

Packing: 32pcs/carton, 62x29x29cm, 14kgs

### XC-445A Intramuscular Injection Pad

The portable model can be used for injection practice. Skin can be easily replaced.

Packing: 32pcs/carton, 62x29x29cm, 8kgs



### XC-445B IV Injection Pad

The model has four simulation blood vessels. Can be used to simulate the piercing exercises, and the skin of the model is Lifelike, it can repeatedly puncture. Touch the skin under the blood vessel exhibits good skin feel and the inserting needle feeling are like real Human.

Packing: 10pcs/carton, 40x35x29cm, 13kgs

### XC-455 Assessment Guidance Model for Hemostatic of Surface Blutpunkte

This model can simulate areas of petechiae, and also can be used for practicing operating hemostasis while several vascular hemorrhaging.

Packing: 4pcs/carton, 46x37x27cm, 8kgs







### XC-456 Ostomy Nursing Model

The model is designed to help introduce the essentials of ostomy care.

1) The anatomy of latero-abdominal median incision, colostomy and ileostomy are carefully reproduced to provide lifelike functions and appearance. The model can be operated in erect position or side-lying position.

2) Intubation feeding can be actually operated in the ileostomy.

3) Ostomy care can be operated in the colostomy, including excretion of synthetic stool, irrigation and stool bag care.

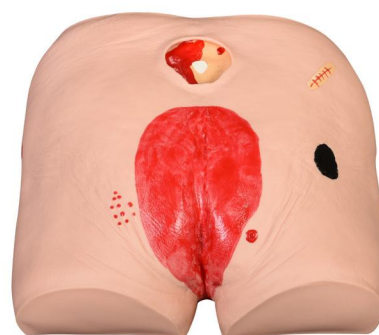
Packing: 1pcs/carton, 43x28x44cm, 9kgs

### XC-459 Decubitus Ulcer Care Model

It is molded from an old patient, looks and feels realistic, it can help people learn more about decubitus ulcer training, decubitus ulcer staging, decubitus ulcer stages, and decubitus ulcer simulations.

This care model shows 4 stages of ulceration formed by pressure ulcer. Shows eschar, subcutaneous fat, undermining, tunneling, slough, eschar and exposed bone (with osteomyelitis).

It could be used for incision washing, evaluation and measurement, also the measurement of wound length, depth, undermining and tunneling.



Packing: 1pcs/carton, 43x25x35cm, 6kgs



### XC-459A Decubitus Evolution Model

This model contains six modules, shows various stages of decubitus. It can help learning more about decubitus and nursing skills. Made of advanced PVC, washable and durable.

Packing: 1pcs/carton, 43x28x44cm, 9kgs

### XC-460 Enema Administration Simulator

The model can be used for standard operation of enema, can reveal standard enema position.

Packing: 1pcs/carton, 43x28x44cm, 8kgs



## XC-400 Simulator Series



### ⚠ XC-439 Advanced Suture Practice Arm



### ⚠ XC-440 Advanced Suture Practice Leg

These two products provide a realistic suturing demonstration. Soft and pliable for easy sewing. These products are provided with "wounds" which can be sutured repeatedly, new "wounds" can be cut also.

XC-439 Packing: 4pcs/carton, 64x33x29cm, 8kgs

XC-440 Packing: 2pcs/carton, 74x43x29cm, 10kgs

### ✓ XC-471 Surgical Suture and Bandaging Model

The simulator provides commonly used surgical incisions, which simulate all kinds of female thoracic and abdominal incisions, tube drains and amputation stump. Students can practice wounds treatments of washing, disinfecting, changing dressing, bandaging and etc.

Simulator features the following simulated wounds:

1. Thyroidectomy
2. Mid-sternal split - with two chest tube drains
3. Right mastectomy - with simulated drain
4. Right cholecystectomy - with simulated T-tube
5. Laparotomy.
6. Appendectomy.
7. Left colostomy.
8. Right ileostomy.
9. Abdominal Hysterectomy .  
(transverse incision).
10. Left nephrectomy .  
(thoraco-abdominal incision).
11. Right nephrectomy (oblique incision).
12. Laminectomy.
13. Sacral decubitus ulcer - stage 2.
14. Right thigh amputation stump.

Packing: 1pcs/carton, 79x48x27cm, 9kgs





### XC-472 Comprehensive Surgical Skills Training Model

The model provides trainings of incision, suturing and ligaturing of skin, blood vessel, intestinal canal and deep tissue.

- 1) Skin modules: surgical incision, suturing, ligaturing, ligature cutting and dermal suture out of skin
- 2) Intestinal canal module: two types of 20mm and 30mm diameter, practice ring clamp, discussion, anastomosis, ligaturing and cutting of intestinal canal
- 3) Blood vessel module: practice ring clamp, cutting and ligaturing of blood vessel
- 4) Deep ligature module: practice deep ligaturing in the narrow space
- 5) Small size, portable, replaceable modules

Packing: 10pcs/carton, 82x44x33cm, 10kgs

### XC-473 Knot Tying Trainer

A trainer for teaching all surgical knot tying techniques skills

- 1) One-handed reef knot technique.
- 2) Instrument tie.
- 3) Surgeon's knot.
- 4) Slip knot.
- 5) Tying in a small opening.
- 6) Tying at depth vertically in a large opening.
- 7) Tying at depth, at an angle, in a large opening.

Packing: 8pcs/carton, 58x45x50cm, 14kgs



### XC-475 Ingrowing Toenail Trainer

Ingrowing Toenail Trainer model closely mimics an inflamed toe end with an ingrowing toenail, is mainly used in removing the ingrowing toenail. Finger shape lifelike, correct anatomy structure, toe end can be replaced. This model is one of the most commonly used materials in clinical surgery and suture training area.

- 1) Ring block techniques
- 2) Application of tourniquet
- 3) Wedge exsion
- 4) Partial nail avulsion
- 5) Total nail avulsion
- 6) Phenolisation techniques
- 7) Ablation of the nail bed

Packing: 20pcs/carton, 54x28x21cm, 6kgs



## XC-400 Simulator Series



### XC-465 Pneumothorax / Pleural Drainage (Artificial Hydrothorax) Simulator

This manikin is an ideal teaching aid of pneumothorax decompression and closed chest drainage of hydropneumothorax.

#### Features:

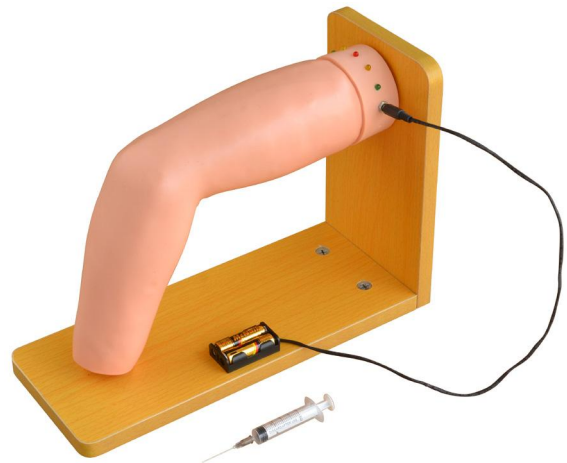
- 1) Pneumothorax decompression, closed chest drainage of hydropneumothorax and drainage tube care after operation can be practiced.
- 2) There are two visual windows in right thorax to show each layer of anatomical structures.
- 3) Pneumothorax decompression training, closed drainage of hydropneumothorax training and thoracocentesis training in the left thorax.
- 4) The color, volume and viscosity of the drainage solution can be regulated.

Packing: 1pcs/carton, 56x24x54cm, 12kgs

### XC-466 Elbow Joint Intracavitary Injection Simulator

- 1) Adult female arm, setting position is according to Medial epicondyle of Humerus and external epicondyle of humerus, flexible elbow joint.
- 2) Standard anatomical structure: internal condyle of humerus, external condyle of humerus, cubital nerve, ulna, radial bone and cavity of elbow joint.
- 3) Therapy site of golf elbow and tennis elbow; palpation.
- 4) Puncture parts: internal condyle of humerus, external condyle of humerus, alarm after pressure or puncture.

Packing: 1pcs/carton, 48x24x30cm, 6kgs



### XC-452 Shoulder Joint Intracavitary Injection Model

- 1) Standard anatomical structure, scapula, clavicle, humerus, deltoid, biceps muscle of arm and important ligament of shoulder joint. Train palpation technology of shoulder puncture positioning.
- 2) Standard position study for puncture and injection.
- 3) Intelligent evaluation system: the green light on the control box will indicate correct puncture site.

Packing: 1pcs/carton, 48x36x32cm, 7kgs





### XC-461 Central Venous Puncture Model

This model is divided into internal carotid artery, carotid artery, subclavian vein and femoral vein and main arteries of femoral artery. Can be used for the injection of internal jugular vein, collarbone vein and femoral vein, blood and other targeted training and the practice of long catheter intubation. This model not only can simulate the pulse of carotid artery, and femoral artery, but also can locate veins.

Packing: 1pcs/carton, 92x51x23cm, 11kgs

### XC-463 Lumbar Puncture Model

- 1) In order to observe the shape of vertebral, the place of the L1 and L2 is uncovered.
- 2) L3-L5 spinous process and sacrococcyx are the functional positions for puncturing. Clear marks on these parts facilitate to skills training, including lumbar anesthesia, epidural anesthesia and caudal anesthesia.
- 3) The exercise process can be operated in sitting position or lateral position.

Packing: 1pcs/carton, 43x28x44cm, 11kgs



### XC-464 Abdominal Puncture Model

This model is in supine position, obvious anatomical structure can be touched. There is obvious feeling when needle penetrates into the right position, can simulate draw out abdominal effusion.

Packing: 1pcs/carton, 43x28x44cm, 8kgs

### XC-468 Prostate Examination Simulator

Features:

- 1) Model vividly, feel real, life-like.
- 2) Prostate exam position: knee-chest position. digital rectal examination, DRE training.
- 3) Five replaceable prostate (normal prostate, bilateral benign prostatic hyperplasia, unilateral benign prostatic hyperplasia, bilateral prostate cancer, unilateral prostate cancer)
- 4) Prostate models stored in the box, changed easily.

Packing: 1pcs/carton, 43x25x35cm, 6kgs





## XC-400 Simulator Series



### ◀ XC-489 Preoperative Aseptic Operation Training Simulator

With good flexibility, elasticity and lifelike texture, the model provides a good training aid for aseptic skill. The model can be used repeatedly.

Features:

1. Disinfection skill training
2. Abdominal wall anatomy: skin, subcutaneous tissue.

Packing: 1pcs/carton, 92x51x23cm, 11kgs

### ▶ XC-402 Model of Course of Delivery

- 1) Vertical section model, designed in accordance with the human physiological anatomy structure.
- 2) Accurate anatomic marks, obvious outline of uterus and body pelvis.
- 3) Delivery mechanical parts demonstrate the whole delivery process. Including engagement, descending, flexion, internal rotation, extension, restoration, external rotation and shoulder delivery.
- 4) Simulation birth canal skin, simulate the real delivery situation.
- 5) The fetal skin is soft and fontanel is visible.

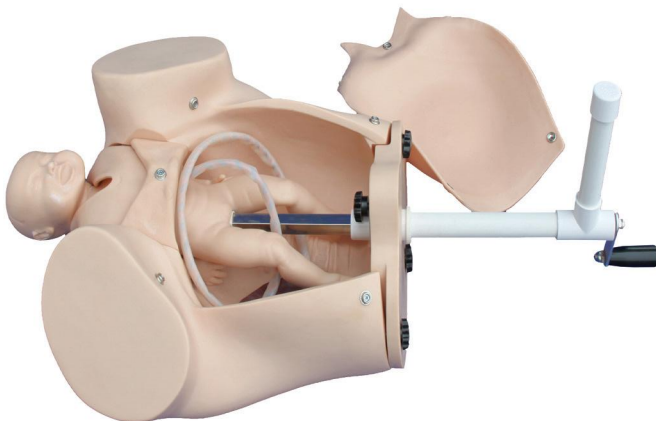
Packing: 1pcs/carton, 65x49x44cm, 10kgs



### ◀ XC-402A Model of Course of Delivery

- 1) Demonstrate the whole process of delivery;
- 2) Demonstrate the fetus, umbilical cord and placenta of vacuum-assisted delivery, flexible fetal joint, and multiple normal and abnormal positions of fetal delivery can be showed;
- 3) Can practise and master the comprehensive skills of normal labor, abnormal labor (dystocia), midwifery and perineum protection.

Packing: 1pcs/carton, 51x28x51cm, 10kgs





### ➤ XC-419A Midwifery Training Simulator

The pelvic is life size with primary landmark and hand depicted outline. Smooth, soft skull with fontanelles for realistic vacuum delivery. All joint movements allow for different fetus positions to demonstrate a wide variety of normal and abnormal deliveries.

Packing: 1pcs/carton, 52x29x52cm, 9kgs



### ➤ XC-419B Dystocia Training Simulator

The model can simulate all kinds of abnormal deliveries. Pelvic stenosis can be showed by inflatable air bag and abnormal positioning of fetus demonstrates dystocia.

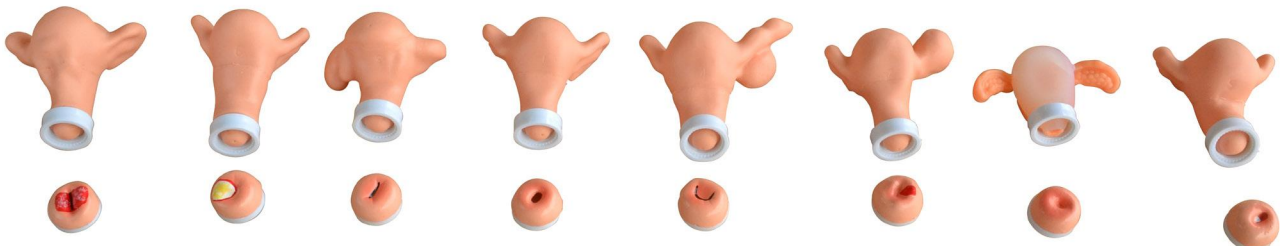
Packing: 1pcs/carton, 52x29x52cm, 10kgs

### ➤ XC-411 Gynecological Training Simulator

The model can be used for:

- 1) Palpation of normal and pregnant uterus.
- 2) Bi-manual pelvic and tri-manual pelvic examination
- 3) Vaginal examination.
- 4) Visual recognition of normal and abnormal cervixes.
- 5) Contraceptive instrument insertion and removal.
- 6) Observation of uterus, ovary, fallopian tubes, and ligament teres.
- 7) Normal and abnormal uterus and attachment model .
- 8) Place and remove IUD by using the guide fork of contraceptive ring
- 9) Gravid uterus (five-mouth fetus).
- 10) Extra-uterine pregnancy (ampullary pregnancy).
- 11) Salpingemphraxis.

Packing: 1pcs/carton, 51x28x51cm, 6kgs



## XC-400 Simulator Series

### ➤ XC-412 Advanced Maternity Model

This simulator demonstrates palpation, embryo heart sound auscultation, pelvic measurement and mammary nursing training. Uterus can be inflated to lifelike through air filling. The speed of fetal heart sound and volume can be adjusted.

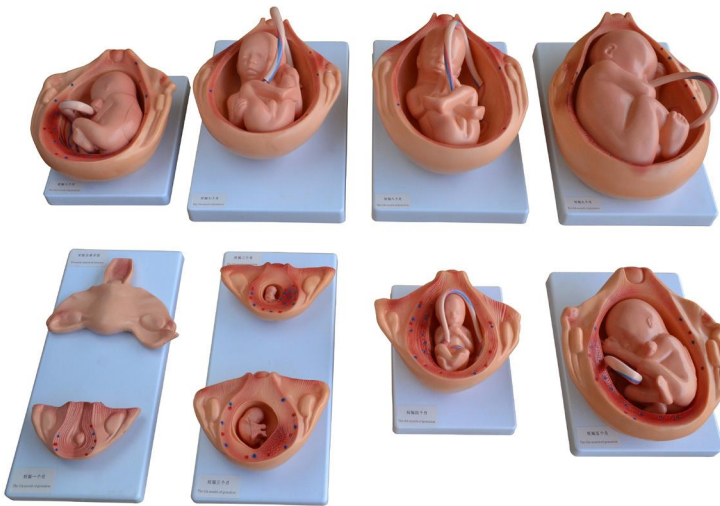
Packing: 1pcs/carton, 60x35x47cm, 15kgs



### ◀ XC-414 The Development Process for Fetus

The model consists of 10 parts and show the relationship between fetus and uterus during the gestation period. Dimension: Natural size, on the base.

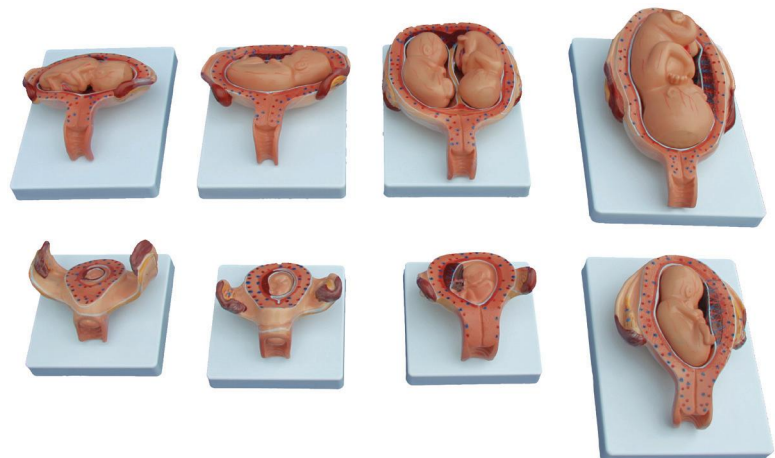
Packing: 1set/carton, 77x41x33cm, 11kgs



### ➤ XC-414A The Development Process for Fetus (Half-Size)

This model shows relationship between fetus and uterus in 1st, 2nd, 3rd, 4th, 5th, 6th, 7th month pregnancy, and twins course in the 5th month. Consist of 8 parts.

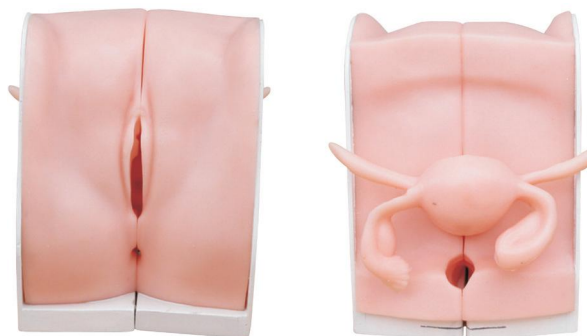
Packing: 1set/carton, 54x28x21cm, 7kgs



### ➤ XC-417 Contraception Guidance Model

This model shows the anatomical section of female genitals. It can be demonstrated how to put the pessary, how to put contraceptive medicine membrane or tablet, how to put in and take out the IUD and how to make induced abortion etc.

Packing: 10pcs/carton, 74x43x29cm, 12kgs



### ◀ XC-417A Female Contraception Practice Model

Simulate anteversion uterus, fallopian tubes, labium and vagina. Expansion of vagina, the use of vaginal speculum, operation of female condom, contraceptive sponge and cervical cap. Size: 23x17x14cm.

Packing: 10pcs/carton, 74x43x29cm, 8kgs

### ➤ XC-417B Male Condom Simulator

The model is vivid and can be used to demonstrate use of condoms. Consists of penis, syringe and simulated semen can simulate ejaculation process.

Packing: 20pcs/carton, 55x39x47cm, 8kgs



### ◀ XC-418 Breast Examination Model

The model is available for teaching and practicing breast palpation techniques. Designed with a concave back allow placement against the patient for ease in demonstrating or practicing palpation techniques. The breast contains several abnormalities, allows women to practice all phases for breast examination.

Packing: 4pcs/carton, 46x37x27cm, 11kgs

## XC-400 Simulator Series

### ➤ XC-418B Lactation Training Model

This model features an enlarged nipple and darkened areola. Ideal to demonstrate breastfeeding and lactation skills.

Packing: 10pcs/carton, 74x43x29cm, 12kgs



### ◀ XC-424 Advanced Newborn Nursing Model

This model is with realistic size of a newborn infant.

Features:

1. Head, neck and limbs can be moved, changeable chest skin
2. Head venipuncture
3. Umbilical vein puncture
4. Endotracheal intubation
5. Nursing of gastric lavage, enema and catheterization
6. Fistula drainage
7. Deltoid and buttock intramuscular injection
8. Gastrolavage, colodysis, urethral catheterization

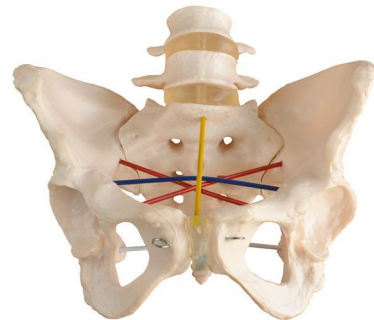
Packing: 1pcs/carton, 64x20x34cm, 6kgs

### ➤ XC-469 Pelvimetry Demonstration Model

Features:

- 1) An adult pelvic model, life size, with accurate anatomical structure.
- 2) Show three planes of pelvic cavity:
  1. Pelvic inlet plane.
  2. Pelvic midplane.
  3. Pelvic outlet plane.
- 3) Consists of structures of hip, sacrum, sacral promontory, coccyx, ischial tuberosity, sacroiliac joints, iliopubic eminence, pubic symphysis, and the 4th, 5th, lumbar vertebrae, etc.

Packing: 10pcs/carton, 74x43x29cm, 11kgs



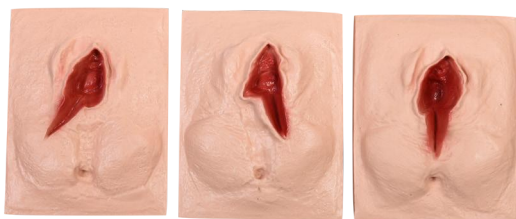
### ◀ XC-490 Lower Stump Bandaging Simulator

Features:

1. Simulate leg amputation patients, right leg cut off below the knee, left leg cut off in the middle of the thigh.
2. Convenient and reasonable model design, bandages can bypass the buttocks and wrap to the ridge level of the iliac.
3. Circular bandage, spiral bandage, serpiginous bandage, figure of eight bandage.
4. Demonstrate the fixing method of the two broken end after wrapping the bandage.

Packing: 1pcs/carton, 64x20x34cm, 6kgs





### ➤ XC-447 Vulva Suturing Training Simulator

Right, left or median posterior incision can be selected to exercise perineum cutting and suturing.

Packing: 8sets/carton, 70x68x52cm, 16kgs

### ➤ XC-447A Perineum Cutting and Suturing Training Simulator

Feature:

- 1) This model is designed for practice of perineum cutting and suturing
- 2) The main structure of the simulator is a perineum, which is made of simulative foam, and the inner muscle is soft PVC. The simulator is mounted on a plastic framework, easy disassembly.
- 3) There are handles in the back and bottom of the simulator to adjust tension of the perineum.
- 4) Size:36x34x26cm.

Packing: 10pcs/carton, 53x39x47cm, 20kgs



### ➤ XC-448 Advanced Artificial Abortion Simulated Uterus

- 1) Three pregnant uterus can be opened and add to simulated gestation sac
- 2) Uterine dilator and curet can be inserted into cervix; can simulate curettage operation and the simulated gestation sac can be scraped
- 3) With basement support and can fix the uterus in the right position.

Packing: 4pcs/carton, 46x37x27cm, 7kgs

### ➤ XC-449 Labor Delivery Module

- 1) Six labor stations selected to represent conditions of the cervix and vagina prior to labor, during labor, and at birth
- 2) Stations illustrated are:  
STA -5 prior to onset of labor;  
STA -4 cervix partially effaced;  
STA -3 cervix fully effaced;  
STA 0 fetal head at plane of ischial spine;  
STA +2 cervix nearing full dilation;  
STA +5 crowning of fetal head.

Packing: 1pcs/carton, 43x25x35cm, 7kgs





## XC-400 Simulator Series



⚠ XC-409 Newborn Model (Baby Model)



⚠ XC-409A New Style Newborn Model (Boy)



⚠ XC-409A-1 New Style Newborn Model (Girl)

The size and configuration of these three models are almost as same as the normal newborn baby. The head, upper limbs, lower limbs and all joints are flexible. It can demonstrate the characteristic of the newborn baby and all kinds of operations in clinic education: includes different parturition method, newborn baby bath etc. Made of hard plastic, washable. Length: 52CM, head diameter: 34CM.

Packing: 10pcs/carton, 57x42x71cm, 13kgs



⚠ XC-409B Advanced Newborn Care Model (Boy)



⚠ XC-409B-1 Advanced Newborn Care Model (Girl)

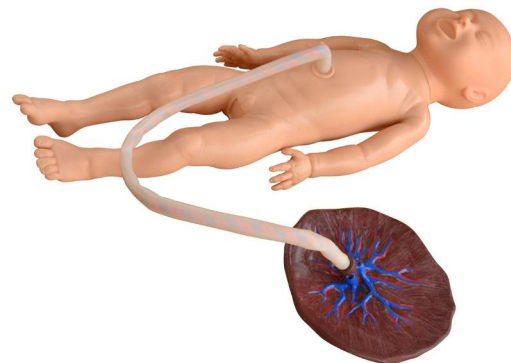
This model shows realistic fontanels, coronal suture and parietal suture. Can place nasal and oral gastric tubes; rectal temperature measurements; training of bathing, lactation, lavage, etc.

Packing: 1pcs/carton, 52x35x15cm, 8kgs

### ➤ XC-409C Advanced Neonate Umbilical Cord Nursing Model

- 1) Female newborn systemic model, moveable head and limbs
- 2) Realistic umbilical cord with umbilical vein and artery
- 3) Umbilical cord ligation and nursing, realistic touch feeling, the enough length of umbilical cord can be used continually
- 4) Neonatal basic nursing: lactation, sponge washing, wearing clothes, changing diapers.

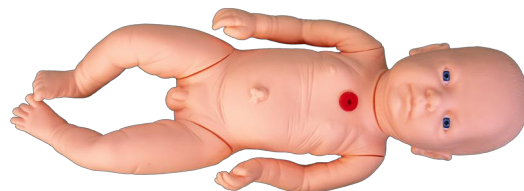
Packing: 1pcs/carton, 65x18x16cm, 7kgs



### ➤ XC-409D Tracheostomy Care Infant Model

This model shows the whole baby body, with pharynx, epiglottis, trachea, esophagus, cricoid cartilage anatomical structures, etc.

Packing: 10pcs/carton, 57x42x71cm, 13kgs



### ⬅ XC-409E Neonate Scalp Venipuncture Model

This model has main veins of the scalp, including venae temporales superficial vein and venae frontales, can be used to infusion, injection and phlebotomy. There is obvious feeling when needle penetrates into the veins. Blood flashback indicates proper insertion.

Packing: 4pcs/carton, 46x37x27cm, 8kgs

### ➤ XC-483 Advanced Infant Full Body Venipuncture Simulator

- 1) Venipuncture position in veins of head and neck.
- 2) Venipuncture position in median cubital vein, axillary Vein, hand vein in right-left arm.
- 3) Venipuncture position in umbilical cord, I.V, draw blood, Umbilical cord catheterization.
- 4) Venipuncture position in right leg, including great saphenous vein, small saphenous vein, transfusion training
- 5) Buttocks Intramuscular Injection.
- 6) Obviously outflow of simulated fluid return proves correct puncture position; a same puncture position can withstand hundreds of times repeated puncture but not leakage.
- 7) Oral and nasal feeding, stomach intubation, suction, also training fixing nasogastric tube, dressings, purification, nursing.

Packing: 1pcs/carton, 44x17x35cm, 4kgs



### ⬅ XC-481 Child Bone Marrow Puncture and Femoral Venous Puncture Model

- 1) Simulate child leg, flexible joint, can place the suitable operating position.
- 2) Anatomic landmark clearly, knee joint, patella, tibia, tibial tuberosity.
- 3) Replaceable puncture skin, Injection module, simulated tibia and femoral vein vessel.
- 4) Femoral pulse is touchable to locate operation position.
- 5) Outflow of simulated fluid proves correct puncture position (tibia puncture/ femoral venous puncture).

Packing: 1pcs/carton, 77x28x22cm, 8kgs

## XC-400 Simulator Series

### ➤ XC-482 Infant Bone Marrow Aspiration Training Simulator

- 1) Simulate 6 month infant, Provide infant legs tibia puncture operation and realistic sense of needle; there is an obvious feeling when needle penetrates into veins and outflow of simulated bone marrow.
- 2) Replaceable skin and tibia.
- 3) Accessory: sealing paste for tibia puncture.

Packing: 1pcs/carton, 37x20x27cm, 3kgs



### ⬅ XC-484 Advanced infant venipuncture arm

Simulate infant left arm, life size, design soft skin, skeleton according to the anatomical characteristic of infant arm, hand can be bent, Made of imported plastic material.

Features:

- 1) There is obvious feeling when needle penetrates into the vein. And blood flash back indicates proper insertion.
- 2) Provide trainings of hand back venipuncture, draw blood, blood transfusion.
- 3) Skin and vein is replaceable.

Packing: 1pcs/carton, 38x20x28cm, 3kgs



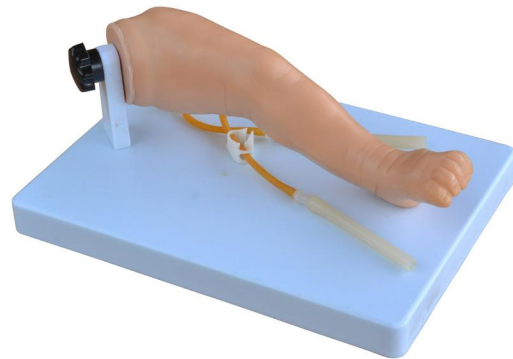
### ➤ XC-485 Advanced infant venipuncture leg

Simulate infant left leg, and design the skeleton, skin, muscle blood vessel according to the anatomical characteristic of infant leg. The model is life size and made of imported plastic material.

Features:

- 1) There is obvious feeling when needle penetrates into the vein. And blood flash back indicates proper insertion.
- 2) Provide trainings of instep venipuncture, great saphenous venipuncture, small saphenous venipuncture and heel puncture.

Packing: 1pcs/carton, 38x20x28cm, 3kgs



### ⬅ XC-486 Infant Artery Puncture Arm

Life size infant right arm, can actually identify puncture locations through palpation of the pulse at radial or brachial sites.

1. Realistic arterial pressure forms a realistic backflow of blood in the syringe, confirming proper needle location in the artery.
2. Realistic resistance of tissue and artery wall felt with the injection needle.
3. The arm has one artery tubing section installed.

Packing: 1pcs/carton, 38x20x28cm, 3kgs

