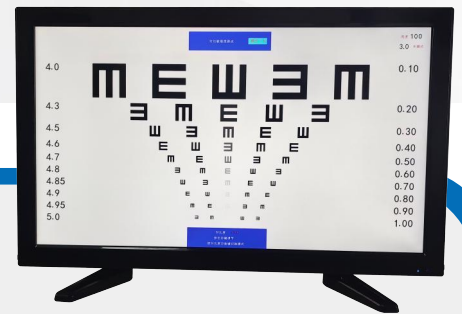


LCP-150

LCD Chart Projector



LCD Vision Chart, also known as an Automatic Electronic Vision Tester, features optotypes arranged in strict accordance with the latest national visual acuity standards. It is suitable for general physical examinations, vision screening for children, adolescents, and adults, as well as for ophthalmic and optometric clinical diagnosis, academic research, teaching, and eyeglass fitting in various fields.



PRODUCT FEATURES

Stylish and modern design with a slim narrow bezel and elegant wide screen.

Features a 23-inch professional medical-grade LCD display with 1080P high resolution (1920×1080 pixels) and a 1000:1 high contrast ratio, ensuring clear and precise optotype presentation for more accurate vision testing.

Equipped with a reliable, self-developed high-performance mainboard for stable and durable operation.

Supports red-green dissociation visual function testing, WeChat QR code scanning, and Bluetooth connectivity. The built-in Bluetooth module enables remote control with a working distance of over 30 meters.

The unique backlight adjustment function adapts to various indoor and outdoor lighting conditions. Brightness can be finely tuned—from very low in dark rooms to very high in bright environments—to ensure optimal contrast.

The testing distance can be continuously adjusted from 1.0 to 6.0 meters, accurate to 0.1 meter, allowing precise optotype size calibration according to the examination room size.

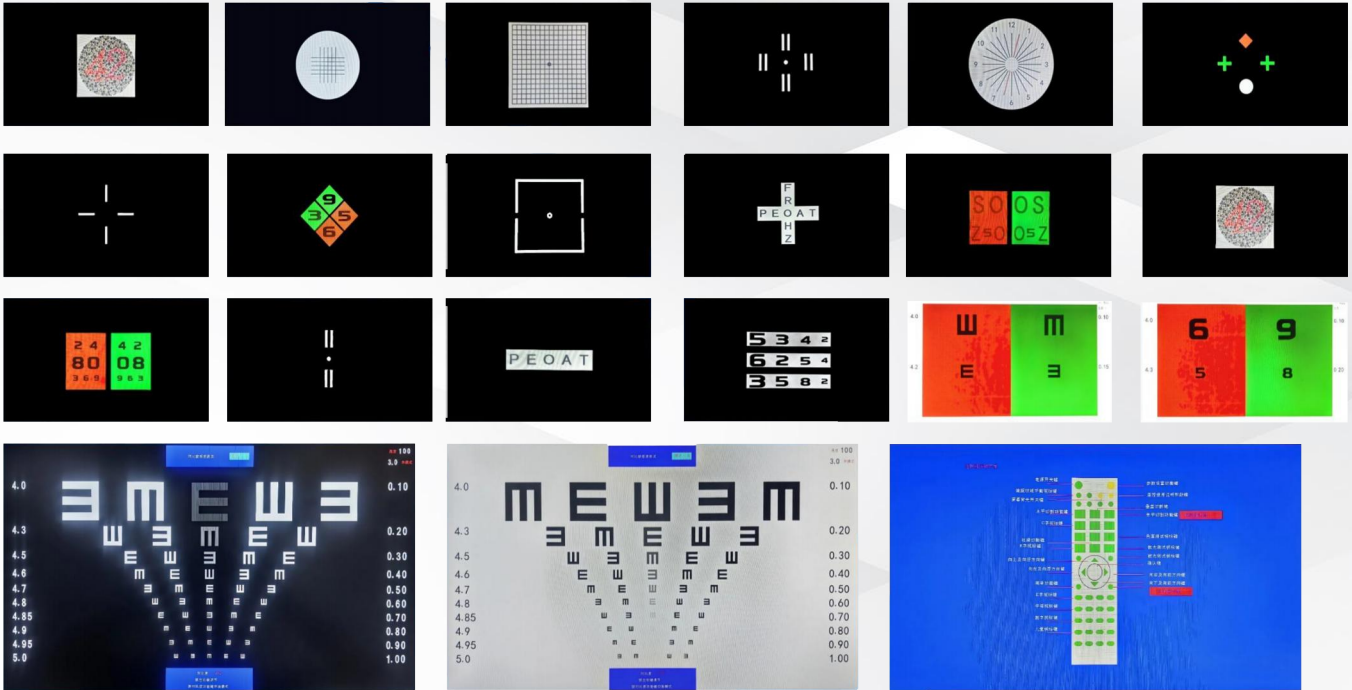
Provides contrast sensitivity testing using sine wave grating charts, analyzing the results to offer detailed data and professional diagnostic insights.

Widely applicable to optical shops, vision care centers, hospitals, and optometry training institutions.

Easy to operate, intelligent and efficient for vision screening with anti-cheating features—no professional supervision required throughout the process.

All projection equipment is certified as Class II medical devices.

Optotype Chart



Specifications

- **Screen Size:** 23 inches

- **Brightness:** 80–320 cd/m²

- **Basic Optotypes:** E, C, Letters, Numbers, Pediatric, ETDRS

- **Functional Optotypes:** Solid/Dotted Astigmatism Chart, Dots, Red-Green, Cross Grid, Worth 4-Dot, Stereo, Maddox Rod, Horizontal Alignment, Vertical Alignment, Vertical Line, Horizontal Line, Cross Ring, Cross, Cross Fixation Point, Clock Dial, Binocular Balance, Color Blindness, Contrast Sensitivity Function (CSF)

- **Optotype Size Range:**
 International Standard: 0.1–2.0
 Chinese Standard: 4.0–5.3
 American Standard: 20/10–20/200
 British Standard: 6/3–6/60

- **Display Modes:** Single optotype, single row, single column, full screen, and pointer function

- **Optotype Background:** Red/green, black/white, contrast, low brightness

- **Working Distance:** 1–10 meters (adjustable in 0.1 m steps); maximum working distance ≥10 meters, remote-controlled

- **Test Modes:** Naked-eye test, with-glasses test, and low-vision test (≤4.0), with automatic or manual switching

- **Installation Options:** Desktop, wall-mounted, or independent stand (optional)

- **Input Power:** AC 100V–240V, 50Hz/60Hz

- **Dimensions:** 560 mm × 345 mm × 50 mm

- **Weight:** Approx. 4.95 kg

- **Resolution:** 1920 × 1080

- **Rated Power Consumption:** 48 VA
