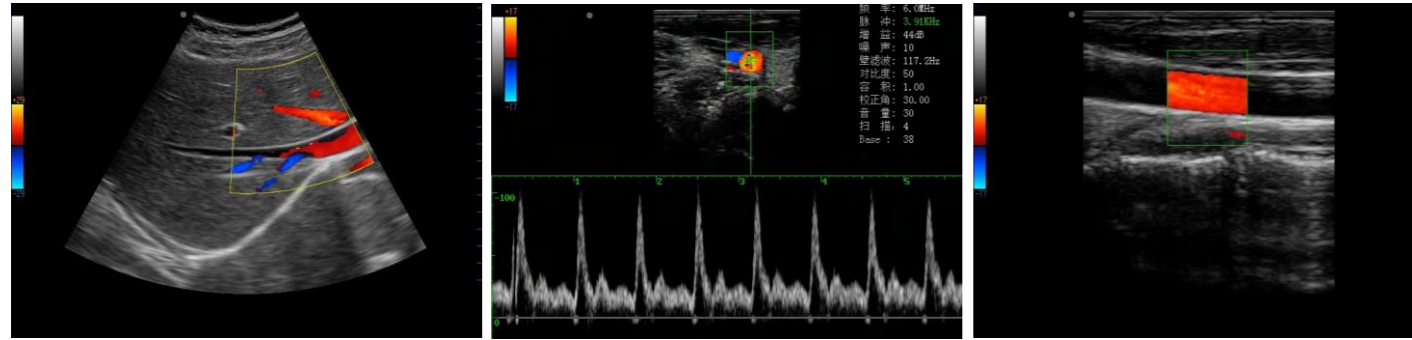


## Clear clinical images

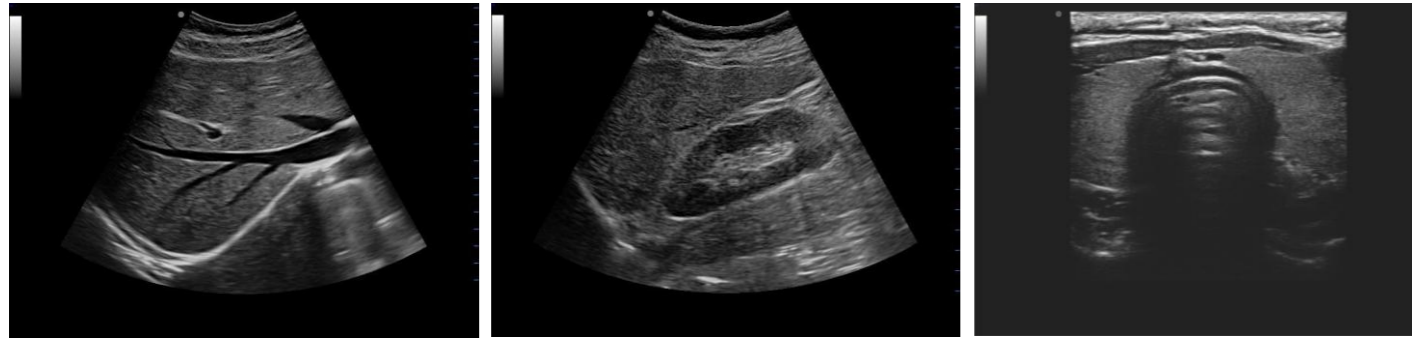
Leading ultrasound technology achieves clear diagnostic images



Liver

B+C+D

Carotid



Liver

Kidney

Thyroid

## Abundant probes

Multiple probes configuration for great varieties of clinical applications

1 Linear probe



2 Convex probe



3 Trans-vaginal probe



4 Micro-convex probe



Tech for health

Clear Image · Accurate Diagnosis

**C50** ▶ Portable Full Digital Color Doppler Ultrasound System





# C50 ▶ Portable Full Digital Color Doppler Ultrasound System

C50 is based on newly upgraded ultrasound platform with improved image quality, applies to various scenes of ultrasound diagnosis, such as routine exams/ public health check up system/ health screening/ emergency treatment and so on. Its clearer image ability with cost effective price satisfies the demands of basic medical services, and benefits more people.

Excellent Image · Benefit Everyone



- ▶ 14 Inches high resolution LCD screen  
Multi-angle adjustable for screen wide view
- ▶ Internal lithium battery  
Satisfy movement scene of diagnosis
- ▶ Two probe ports  
Support probes hot swapping
- ▶ Considerate keys layout  
Accord with ergonomics for more comfortable operation

## Leading Technology

- 
 • Multi-focus transmission, Auto focusing  
Auto focusing technology largely improved imaging precision
- 
 • Mclear speckle noise suppress technology  
Removes the speckle noise in ultrasound images efficiently, and brings clearer diagnostic images
- 
 • Pulse inversion harmonic imaging technology  
All probes support PHI technology
- 
 • Patients report images and text management system
- 
 • Professional presetting
- 
 • Abundant measurement software

