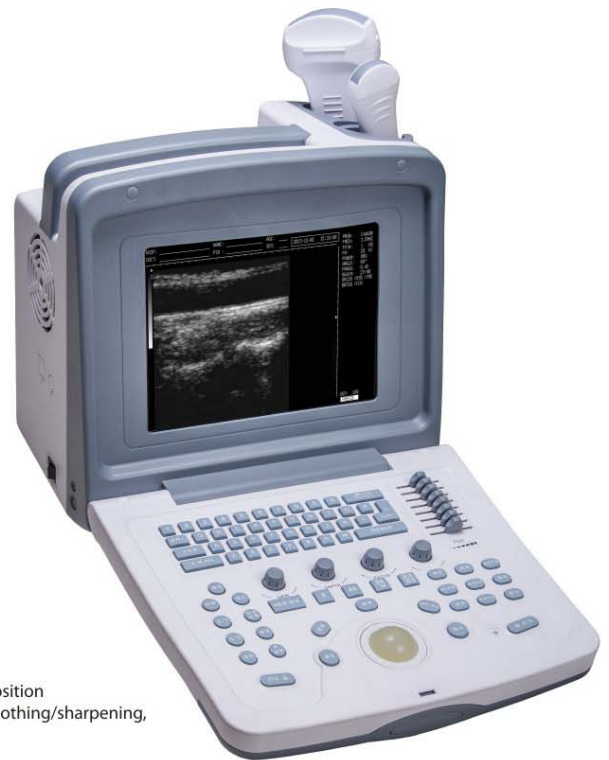


# PW-9618V

## Veterinary Ultrasound Scanner

PW-9618V is a good partner for veterinary to make regular diagnosis and calculate GA of cat, dog, swine, sheep, equine, bovine, etc.



Scanning Mode  
Probe Connector  
Standard Configuration  
Optional Configuration

Convex/Linear/Micro-convex  
2  
6.5MHz Vet Rectal Probe  
3.5MHz Convex Probe  
7.5MHz Linear Probe  
5.0MHz Micro-convex Probe



Cine Loop  
Image Storage  
Display Depth  
Scanning Angle

Video Printer  
Trolley cart  
≥400 frames  
≥64 frames  
≥250mm



Display Mode  
TGC  
Focus Control  
Image Process

Visible and adjustable  
B, B+B, B+M, B+2M, M, 4B  
Total gain, 8-Segment TGC  
Adjustable focus number, focal space, focal position  
Pseudo-color, dynamic range, THI, Image soomthing/sharpening,  
Gama correction, Histogram  
16-level adjustable



Real-time Depth  
Local Zoom  
Measurement  
Report  
Body Mark  
Notation  
Port

Distance, circumference, area, volume, obstetrics (GA for equine, bovine, sheep, swine, cat, dog)  
Measurement reports automatically generate  
≥16 types  
Date, time, name, patient ID, sex, age, doctor, hospital, full screen annotation edit  
PAL-D Video, RS-232, USB2.0

### Multi-frequency probes



3.5MHz Convex Probe



7.5MHz Linear Probe



6.5MHz Vet Rectal Probe



5.0MHz Micro-convex Probe

