

# PW-9618

Full Digital Ultrasonic Diagnostic System

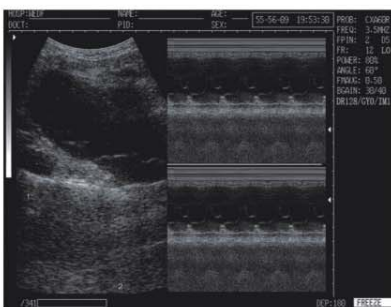


## What's New?

- Full digital beamforming technology
- Probe automatic identification
- Gama correction, histogram
- Automatic report generation(Normal/OB)
- Scanning angle adjustment (Convex)USB 2.0



Excellent images come with the advanced ultrasonic frame-forming technology



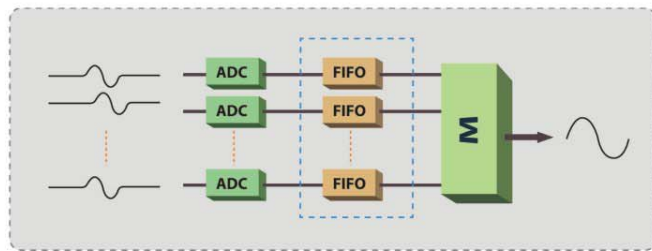
# PW-9618

## Full Digital Ultrasonic Diagnostic System

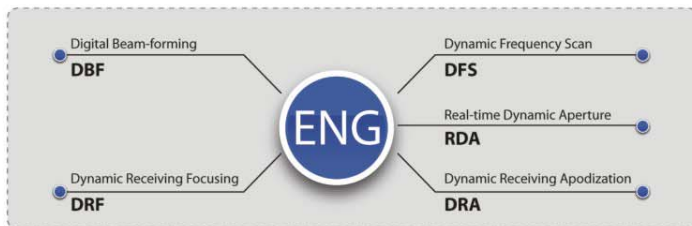
With revolutionary technology of full digital beam-forming, PW-9618 provides the excellent image quality with high resolution and definition. The selectable multiple transducers, powerful measuring and analysis software packages extend its application to broader fields.

### Full Digital Technology

Full digital engine with non-tortured echo ensuring high definition images



Dynamic aperture technology making sure of the clear image from near to far field



DBF: Digital Beam Forming  
 RDA: Real-time Dynamic Aperture  
 DFS: Dynamic Frequency Scan  
 DRA: Dynamic Receiving Apodization  
 DRF: Dynamic Receiving Focusing

### Multi-frequency probes



3.5MHz Convex Probe

Application : Abdomen, GYN, OB, Urology



7.5MHz Linear Probe

Application : Superficial tissue, Small parts, Blood vessel



5.0MHz Micro-convex Probe

Application: Pediatric, Cardiac



6.5MHz Transvaginal Probe

Application: Transvaginal



7.5MHz Endorectal-Probe

Application: Endorectal

Scanning Mode	Convex/Linear/Micro-convex
Probe Connector	2
Standard Configuration	3.5MHz Convex Probe
Optional Configuration	7.5MHz Linear Probe; 5.0MHz Micro-convex Probe 6.5MHz Transvaginal Probe; 7.5MHz Endorectal Probe;Application software, High speed USB cable;Video Printer; Trolley cart; Biopsy Bracket
Cine Loop	≥400 frames
Image Storage	≥64 frames
Display Depth	≥250mm
Scanning Angle	Visible and adjustable
Display Mode	B, B+B, B+M, B+2M, M, 4B
TGC	Total gain, 8-Segment TGC
Focus Control	Adjustable focus number, focal space, focal position
Image Process	pseudo-color,dynamic range,THI, Image smoothing /sharpening, Gama correction, Histogram
Real-time Depth	16-level adjustable
Local Zoom	≥2 times
Measurement:	a) Normal Measurement: Distance, circumference, area and volume b) Cardiac Measurement: LV/VF, AV, MV, PV, TV, HR c) OB Measurement: BDP, FL, AC HC, CRL, AD,GS, G.A,LMP, EDD, FW
Report	≥4 types
Body Mark	≥40 types
Annotation	Date, time, name, Patient ID, sex, age, doctor, hospital, full screen annotation edit
Port	PAL-D Video, RS-232, USB2.0



Distributor: