



FRESH HORIZON, EASY START-UP

Black and White Ultrasonic
Diagnostic System

PW-370



Black and White Ultrasonic Diagnostic System

- The Health Is Within Reach -

Apperance



· Main screen 15" medical HD monitor



· All-in-one keypad



· Front double pull handle



· Flexible caster, directional locking



· Flexible monitor bracket



· Detachable probe hanging slot



· One-piece body structure

Optional

PRINT ANYTIME, ANYWHERE

Special sheet metal custom printer placement box, convenient and practical, solid and reliable, effectively solve the problem of space placement







CONTINUITY PLUS, WORRY-FREE SUPPORTS


5200 mAh built-in battery, 2-3 hour endurance operation, easy to move in various clinical application scenarios




UPDATED ARM ARCHITECTURE, ALL-ROUND PERFORMANCE IMPROVEMENT


Compared with the traditional microcontroller system, ARM architecture using a 32-bit processor, has 4 major advantages:

-  Faster processing speed
-  More powerful processing capability
-  More convenient upgrade maintenance
-  Higher security performance




A wide range of specialist measurement packages





Puncture guidance function



**Obstetrics and Gynecology
Ethnicity Test**

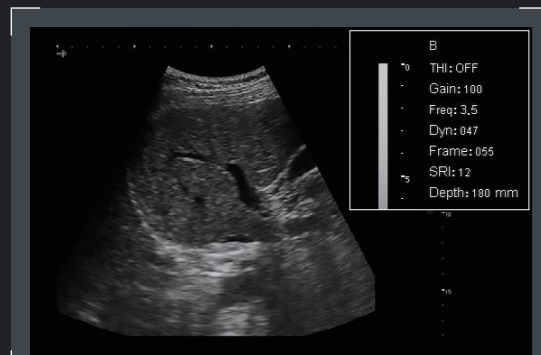
IMAGE PROCESSING FUNCTION --- PSEUDO COLOR

It is a way to change the display mode of black and white images into color display.



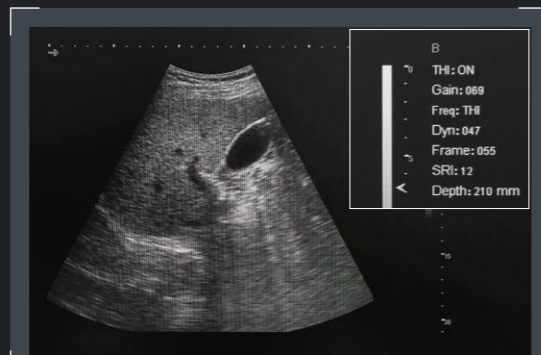
Since the human eye is not very sensitive to the resolution of gray scale levels, the sensitivity of the human eye to different echo intensities can be enhanced after the black and white images are converted to color. Subjectively, the dynamic range of the display signal is increased, and the recognizability of the image boundary is enhanced.

ULTRASONIC EFFICIENT APPLICATION WITH EASE



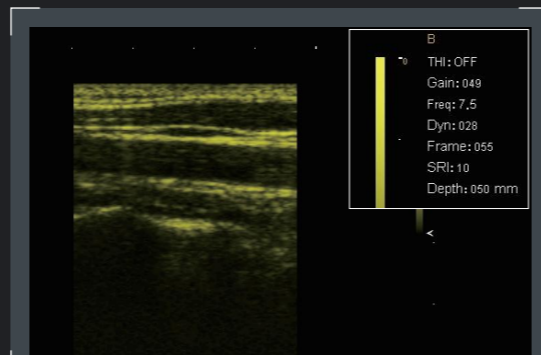
LIVER

B mode, with convex probe



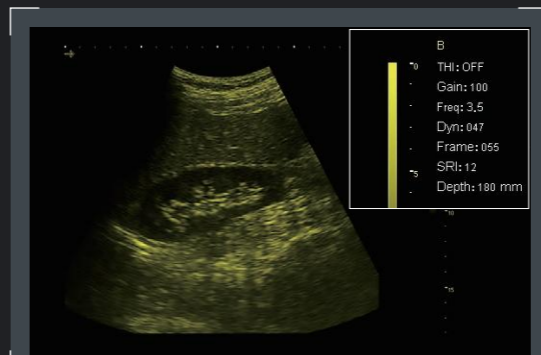
GALLBLADDER

B mode, with convex probe



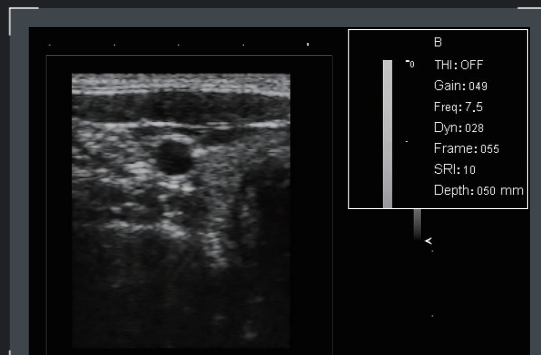
CAROTID

Pseudo color, with Linear probe



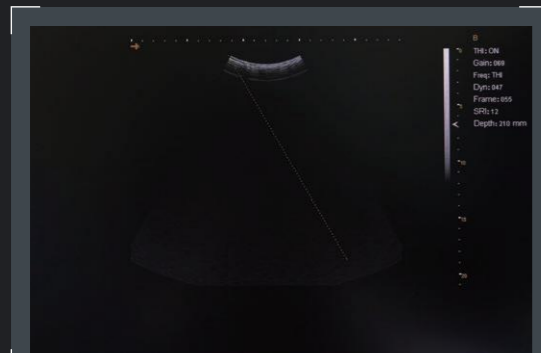
KIDNEY

Pseudo color, with convex probe

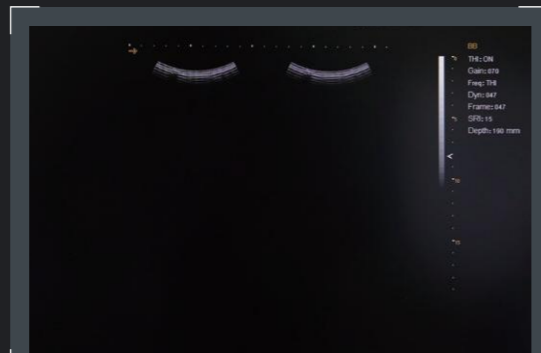


THYROID

B mode, with Linear probe



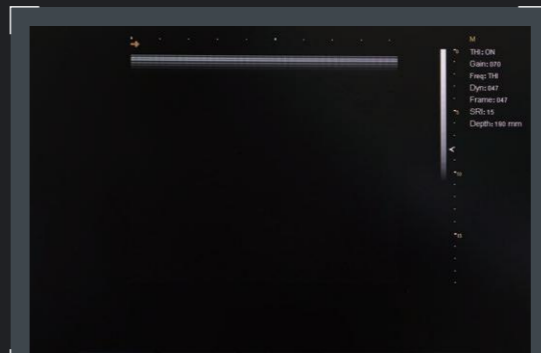
B-MODE



B/B-MODE



4B-MODE



M-MODE



B/M-MODE



ULTRASONIC PART OF THE PROBE DISPLAY



CONVEX PROBE

Application

- Abdomen
- Obstetrics
- Gynecology
- Urology



LINEAR PROBE

Application

- Musculoskeletal
- Vascular
- Small parts



TRANS-VAGINAL PROBE

Application

- Gynecology



TRANS-RECTAL PROBE

Application

- Prostate gland



MICRO-CONVEX PROBE

Application

- Baby organs
- Small parts